

CRICKET

PREMIERS

A GRADE BORONIA B GRADE WARRANDYTE
C GRADE—WARRANDYTE

The 1940 Cricket Season was brought to a close on Monday, when the Finals in A and B Grades were completed. The C Grade Final was completed on Saturday, when Warrandyte defeated Ringwood by nine wickets. Play in the A and B Grades was resumed on Monday at 10.30 a.m., and resulted in Boronia gaining the A Grade Premiership by 201 runs, and Warrandyte the B Grade by 63 runs. Warrandyte have thus brought off the double, winning the B and C Grade Premierships. Since 1920 Boronia has won five A Grade Premierships and Kilsyth four.

A GRADE

BORONIA'S CONVINCING VICTORY.

Boronia on Monday won the 1939-40 A Grade Premiership by defeating Kilsyth convincingly. Boronia possesses a well balanced team, and although at one stage in the season they had to struggle to retain their place in the Four their subsequent improvement brought them ultimate victory.

Cousins, the tall allrounder, has been an acquisition to the team, but in the Final all the members of the team pulled their weight.

Resuming on Saturday, Kilsyth opened with the Fiedler Bros., but with the Boronia bowlers well on the spot wickets fell cheaply, and seven were out for 58. Then a brisk partnership by Brice 66 and J. Gibson 27 put on 88 runs, and gave Kilsyth a chance. Brice batted contentedly, and hit with freedom. One glorious six went right out of the ground. The innings closed for 173. Duke proved Boronia's most successful bowler, getting 4/40.

Boronia opened their second innings with G. Chandler and H. Johnson in a bad light at 5.45, and the third appeal against the light was upheld, and stumps were drawn at 5.50 p.m.

Resuming on Monday, Boronia compiled 169 in their second innings. A fine stand by Cusdin 38 and Emmitt not out 65 placed Boronia in an almost impregnable position. Reg. Gibson bowled effectively to bag 5/61.

Requiring 281 runs for victory, Kilsyth were only equal to 79, giving Boronia the Premiership by 201 runs.

KILSYTH—1st innings.

H. Fiedler, c, b R. Cousins	6
G. Fiedler, b H. Johnson	6
W. Baldwin, c H. Johnson	11
G. Bladen, b C. Duke	6
R. Gibson, c, b R. Cousins	8
G. Baldwin, c, b C. Duke	7
J. Smith, b A. Chandler	1
J. Brice, b C. Duke	66
J. Gibson, lbw, b C. Duke	27
L. Baldwin, not out	9
R. Matthews, c, b G. Chandler	14
Sundries	12
Total	173

Bowling.—R. Cousins, 2/45; Johnson, 2/28; C. Duke, 4/40.

2nd innings.

G. Fiedler, b R. Cousins	14
J. Baldwin, b H. Johnson	3
H. Fiedler, b F. Emmitt	11
J. Gibson, lbw, b F. Emmitt	4
G. Bladen, c and b Cousins	5
J. Brice, b R. Cousins	12
R. Gibson, c, b R. Cousins	9
W. Baldwin, not out	13
J. Smith, b R. Cousins	0
L. Baldwin, b H. Johnson	6
R. Matthews, b H. Johnson	0
Sundries	2
Total	79

Bowling.—H. Johnson, 3/9; Cousins, 5/33; F. Emmitt, 2/13.

BORONIA—1st innings

G. Chandler, lbw, b J. Baldwin	15
H. Johnson, c, b R. Matthews	11
C. Cusdin, b R. Gibson	38
F. Emmitt, not out	65
R. Cousins, b R. Gibson	2
C. Duke, c, b R. Gibson	2
A. Neil, lbw, b R. Matthews	18
A. Burke, c, b W. Baldwin	6
A. Chandler, b R. Gibson	0
R. Madden, c, b R. Gibson	2
R. Leighton, run out	10
Sundries	10
Total	169

Bowling.—R. Gibson, 5/61; Matthews, 2/12.

Croydon and District Agricultural and Horticultural Society

19TH ANNUAL SHOW

EXCELLENT DISPLAY OF FLOWERS

The 19th Annual Show at Croydon was favored by ideal weather conditions, and attracted a large crowd. The gate takings amounted to £70, much the same as last year. The show was officially opened at 3 p.m. by Hon. W. Tyner, M.L.C.

The exhibits in the flower sections were not as numerous as previous years, but the display was excellent, and the quality first rate. The fruit exhibits were down considerably to previous years, and only three fruit-growers exhibited. This was due largely to war conditions, Government fruit acquisition and the recent hot dry spell.

The children's garden circle exhibit of flowers and vegetables was well competed for, and North Bayswater carried off the honors both in the display and in the school garden competition.

Arena events were more numerous than previous years, and excellent displays of riding and jumping were given.

Mr O. Hewish's exhibition of vegetables, which was a feature of previous shows, was this year conspicuous by its absence.

Exhibits in fancy work, cookery, jars, etc., were slightly down on previous years.

The success of the show and the efficient and smooth working of all arrangements reflected great credit on the secretary, Mr B. Cheong, the

assistant secretary, Mr Bob Menzies, the supervisor of the ladies' committee, Mrs Meggs, and a splendid working committee.

The society was assisted during the day by a willing band of voluntary stewards, who attended to gate and other duties.

Luncheon arrangements were again in the hands of the ladies' committee, supervised by Mrs Meggs, and this fine band of voluntary workers assisted largely in the financial success of the show.

Hon. G. L. Chandler, M.L.C., in speaking at the official opening, said that the annual show was the best advertising medium for Croydon. Exhibitors came from far and near, and the potentialities of the district were thus made known in a way that would not otherwise be possible. He trusted the president and committee would retain the support of the district in the good work they were doing.

He desired to congratulate Lt.-Col. Knox, M.L.A., at his first official appearance since the election at Croydon on his unopposed return. (Applause.) He congratulated

the society on the success of their 19th annual show.

Lt.-Col. Knox, M.L.A., who was also called upon to speak, indicated that even in the small things he showed greatness, for he only uttered a few words of thanks.

BLACKBERRY FINES

Five Landowners Penalised

Five persons were fined at the Fern Tree Gully Court of Petty Sessions last Friday, before Mr F. E. Williams P.M., for having failed to clean up blackberry bushes on their properties.

Mrs Dora Lipschutt, of Toorak, was fined £1 in respect of her property of one quarter acre in the east riding of the Fern Tree Gully Shire; Percy L. Pagham, of Box Hill, was fined £1 in respect of his property in the east riding; Mrs Clara Scullin, of Port Melbourne, was fined £2 in respect of her 45 acres of land in the north riding; Mrs Fanny L. Stringer, of Fern Tree Gully, was fined £1 in respect of her three acres of land in the north riding; and Mrs Emma White, of Surrey Hills, was fined £1 in respect of her quarter acre property in the east riding.

Each defendant was ordered to pay 4/1 costs in addition.

Driving Without Licence.

Young Lady Fined.

Charged with having driven a motor car without being the holder of a driver's licence, Miss Isabel McNally, of Balwyn, was fined 10/ and for having driven a motor car on the Main road at Upwey without headlights she was fined 10/ at the Fern Tree Gully Court of Petty Sessions last Friday, before Mr F. E. Williams, P.M.

Evidence was given that the defendant drove the vehicle a distance of 80 yards in Main road, Upwey. It was stated that there was a dangerous bend in the vicinity of where defendant was driving, and there was a fair amount of traffic. A dance had just finished nearby.

PARKING REGULATIONS.

Shire Ranger's Report.

The Shire Ranger (Mr R. C. Johnson) reported to the Fern Tree Gully Shire Council meeting on Tuesday that particular attention had been paid to the parking regulations during the Easter holidays. Owing to the heavy holiday traffic the parking area at Belgrave was very congested.

Regarding the congestion at Upper Fern Tree Gully Mr Johnson reported that he co-operated with the police on Sunday, March 24, and had recommended to Mr Heany that a parking notice be placed at the rear of the parking area, and that a notice, "No Kerbside Parking" be placed along the water tables. This should allow the through traffic to pass through this point with greater speed than at present.

CROYDON MARKET

All classes cattle, pigs, calves, sheep and poultry selling well.

Milking Cows—Not much quality offering. Heifers to £11 7/6; springing cows, £11 15/; heifers to £10 10/; backward, £9 7/6; yearling to £5 12/6; poddies, £4 7/6 and selling freely; store cows, £7 12/6; bullocks to £15 2/6; fat cows, £11 7/6; heifers, £10 10/; beefy cows, £10; choppers, £7 10/; crackers, £5; dairy bulls, £10 12/6. Calves going well. Large vealers, £8 10/; small, £5 5/; calves, 70/; small to 20/ and lightweight to 10/.

Pigs—Heavy porkers, previous week, to 74/; medium porkers, 60/; light, 52/; others up to 43/; stores to 36/; slips, 28/; suckers from 9/ to 23/.

Sheep—Always sell well. Shorn lambs, 25/; two-tooth ewes, 24/6; F.M. ewes, 20/; F.M. wethers, 21/6; two-tooth, 28/2; store lambs, 13/2; ewes, B.M., 10/; rams, 26/.

Poultry—Good yarding, and prices firmer and on the rise. Cockerels to 11/6; cock chickens, 8/9; hens, 10/; W.L. hens, 6/2 odd pens, higher; pullets, 11/1; hen and chicks, 12/; chickens, 5/3; chicks, 2/6; drakelings, 11/; ducklings, 7/6; duck and ducklings, 13/6.

Horses—Steady market. A few changing hands.

Good sale on furniture, sundries, harness, vehicles, implements, timber, galvanised iron, piping, sundries, etc.

Phone Bel. 186

Belgrave Furniture Mart.

(OPPOSITE PICTURE THEATRE)

A. W. BULSTRODE

Furniture Dealer

WE BUY AND SELL FURNITURE

WANTED TO BUY—Furniture, Tools, Etc.

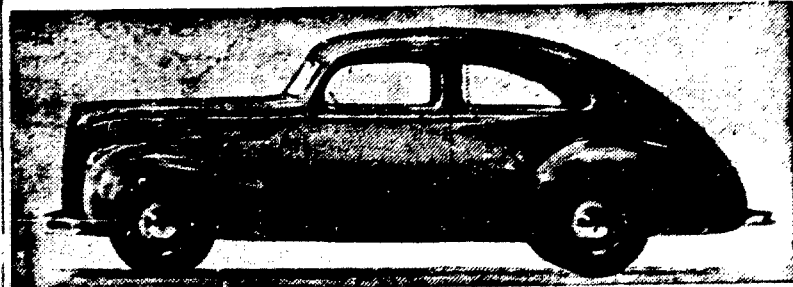
OPEN EVERY DAY from 9 till 6
On Wednesdays from 9 till 1

Vegetables and Fruit on Saturdays. Open until 9 p.m.

Has your Ford got a clean Bill of Health?

A PERIODIC CHECK-UP WITH A FORD LABORATORY TEST SET

adds Thousands of Miles to the Life of Your Car



THE FORD LABORATORY TEST SET

Is the Accurate, Scientific Equipment for Checking Your Ford Car or Truck

ONLY THE FORD DEALER HAS IT

Tate's Motors PTY. LTD.

Phone 16

CROYDON

Water Supply Extensions

In view of the Reticulation of the Bayswater, Boronia and Fern Tree Gully Districts now in progress

Property owners are recommended to have their extensions from the main attended to by

S. F. HUNT

who will be pleased to answer any enquiries and submit quotations
Try the old established firm operating and established in the Gully District for 35 years

S. F. HUNT

Plumber — Ringwood and Croydon

PHONE RINGWOOD 22

BURTON BROS.

FUNERAL DIRECTORS

HAVE DECIDED TO OPEN A BRANCH IN THE

FERN TREE GULLY DISTRICT

All classes of Funerals conducted in any part of

shortest notice

CHARGES VERY MODERATE

Local Agent—R. W. FRYBERG, FERN TREE GULLY

Head Office—MAIN STREET, LILYDALE Tel. 11